



2

Barefoot  
Bowling &  
Trivia Night

3

Golf Day and  
Dinner raises  
over \$67K!

6

Research  
Update

8

You're  
Invited to  
our Ball

WINTER 11




Working with  
MS Research Australia  
to find a cure for MS.

**Every dollar  
raised is placed  
into research.**

The Trish Multiple Sclerosis  
Research Foundation is staffed  
by a team of volunteers and  
donations are gratefully received.

 [www.trishmsresearch.org.au](http://www.trishmsresearch.org.au)

 Cheque to:  
PO Box 28, 12 Philip Mall  
West Pymble NSW 2073

 0410 410 491

All donations of \$2.00 and over  
are tax deductible (DGR 900490691)

ABN 22 089 078 464

INTERVIEW P4

**Helmut Butzkueven**  
**Straight to the cause**



## IN BRIEF

Thank you to wonderful and generous Trish Foundation supporters:

### Sydney Cricket Association Women's Competition

**Sub-Committee**, for inviting Carol Langsford to present the Trish Langsford Trophy and for dedicating the proceeds of the raffle at the Premier's Dinner to the Trish Foundation and also to President Jessica Henry, Kate Evans, the Committee and Harry Solomons, Kingsgrove Sports Centre and Cricket NSW who donated the prizes for the raffle.

### Northern District Cricket Club

President Michael Langford and the Committee for your generous support and for inviting Carol Langsford to present the trophy named after Trish.

Craig Marshall, Century 21 Cordeaux Marshall Gordon, the Foundation's honorary Auctioneer since inception, for again raising funds for the Foundation on Australia Day and also at the Festival on the Green at St Ives. Thank you Craig!

### Re-branding

The Trish Foundation's re-branding was celebrated with the launch of our new website in March.

We are extremely grateful to Andrew Wills, Wills Brand Design and Sue Woodward, Blueprint Advisory for our pro bono re-branding and for giving so much time and expertise to our cause.

Please check out Andrew and Sue's professional work at [www.trishmsresearch.org.au](http://www.trishmsresearch.org.au).



**Mike Toten** who dedicated his 'Aces' tennis initiative to the Trish Foundation again in 2010, setting a new record and boosting our funds for research. Great serving Mike!

### Brave Enough to Dream

Multi-award winning singer/songwriter Allan Caswell, the winner of 6 Golden Guitars and finalist 27 times at Tamworth, winner of two gold singles, one platinum and four gold albums, has written and recorded a 'Song for Trish', Brave Enough to Dream.

Guests at the Foundation's Magical Mystery Ball will be treated to the first public performance of Allan's very special song.

### Demetrios Livissianis' 'Walk for Life'

'Walk for Life' is an inspirational journey being undertaken by fantastic supporter, Demetrios Livissianis in aid of the Trish Multiple Sclerosis Research Foundation.

In August this year, Demetrios will walk from Forster to Sydney, a distance of approximately 300 kilometres, raising funds for multiple sclerosis research and also raising immeasurable awareness of this debilitating disease.

Demetrios has been personally touched with MS over the last 28 years with the passing of his first wife Georgia in 2002 who lost her battle of 20 years with MS.

The Grand Finalé of Walk for Life will occur at the Foundation's Magical Mystery Ball at Hilton Sydney on 10th September 2011 when Demetrios walks into the Ballroom, no doubt to a standing ovation.

Walk for Life aims to raise awareness and funds so the Foundation can continue making a significant contribution to MS research in Australia.

If you wish to sponsor Demetrios' Walk for Life or support in some other way, please contact the Foundation on 0410 410491.

The Foundation is extremely grateful to Demetrios Livissianis for undertaking this inspirational journey to raise funds for MS research. Thank you Demetrios!



## Barefoot Bowling and Trivia Night 2010

Competition amongst teams was fierce at the Foundation's fourth Barefoot Bowling and Trivia Night held at Waverton North Sydney Club on Saturday 13th November 2010.

For the fourth consecutive year sensational supporter **Tania Soulos** conducted the event, being joined by **Stephanie Taylor, Amanda Rensford** and **Anine Leakey**, who all put in a tremendous amount of time and hard work to ensure the special event was a success.

The Barefoot Bowling and Trivia Night was again a huge success raising just under \$15,000 for the Foundation's research.

The event was supported by Tania's family, friends and colleagues as well as those of Stephanie, Amanda and Anine, Foundation supporters, **Sue and Doug Meredith** DMC Digital and Executive Director MS Research Australia **Jeremy Wright**, who all organized tables.

Trivia Master extraordinaire **Bill Gilbert**, who was Master of Ceremonies at the Foundation's first major fundraiser in 2001 and has significantly supported our cause ever since, entertained and occasionally outwitted the audience with great humour and professionalism.

Thank you to Tania Soulos for giving so much time, talent and expertise in leading the organization of the successful event, to Stephanie Taylor, Amanda Rensford and Anine Leakey who also put in a tremendous amount of time and hard work, to Trivia Master Bill Gilbert, to the very generous donors of the brilliant array of items and to everyone who attended and generously contributed to the funds raised for research.

Fantastic organising committee, Anine Leakey, Tania Soulos, Stephanie Taylor, Amanda Rensford



## Golf Day and Dinner

**Niall King** and his colleagues **Ray Wilson, Les Hockley** and **Geoff Thoroughgood** exceeded all expectations, conducting the Foundation's Golf Day and Dinner at Strathfield Golf Club on 17th February 2011.

"Niall, Ray, Les and Geoff did an amazing job in raising the whopping sum of over \$67,000 for research into this disease," said Foundation Director Roy Langsford. "We are incredibly grateful to each of them for their personal generosity and outstanding contribution to our cause, as well as our generous Sponsors, donors and everyone who supported this special fundraiser."

The Golf Dinner began with the Foundation's latest video produced pro bono by DMC Digital and a very encouraging speech by **Jeremy Wright**, Executive Director MS Research Australia who presented progress in MS research and how funds raised by the Foundation are 'multiplied'.

Entertainer **Chris Castle** wowed guests with his wit, great singing, fun games and also doubled as Auctioneer, extracting every last dollar from his audience.

The Monster Raffle again this year made a great contribution, Niall and his colleagues showcasing their great commitment by spending many early mornings selling raffle tickets at Sydney Markets with 5 am starts.

In a special altruistic gesture, **John Murray**, Apollo Fruit at Sydney Markets won the Monster Raffle, a trailer full of goods, and is donating it to Rett Syndrome, another worthy cause with which he has a family connection.

"Australian researchers are making amazing progress in finding a cure for multiple sclerosis," Niall King said. "That progress provides hope for those sufferers of this terrible disease. Let us not halt the progress of the researchers, nor diminish the hope of people with MS because of lack of funds. People who care can make a difference."

Thank you to Niall King, Ray Wilson, Les Hockley, Geoff Thoroughgood, our generous donors, Chris Castle, Strathfield Golf Club and Sponsors, Arbel Investments, Australian Concert & Entertainment Security, Manwar Engineering, Men of League Foundation, St George Cricket Club, Higher Order Thinking School, Niall King, Ray Wilson, Strathfield Dental and Eye Care, Sydney Markets, Warren Saunders Insurance Brokers, Bakehouse Garden Korean Restaurant, Sydney Pet Foods, Waldorf Apartment Hotel Canberra, Joseph P Saad & Co Solicitors, SN King Pty Ltd, Macquarie Leasing, Homebush Fruit Bowl and all the supporters who contributed to the funds raised for our research.

Generous support, St George Cricket Club Team



Her Excellency, Professor Marie Bashir AC, Governor of NSW and Niall King OAM

## Great Australians have their day!

Australia Day 2011 dawned with the news of three amazing people receiving well-deserved recognition.

Long time Trish Foundation volunteer and wonderful supporter, **Niall King OAM** was awarded a Medal of the Order of Australia for service to the community. Niall has led the organisation of Golf Days and Dinners for the Trish Foundation for the past 10 years, raising over \$320,000 for MS research and has also made great contributions to the MS Society's premises at Lidcombe. Niall, a tremendous contributor to the Rotary Club of Strathfield, was also awarded Strathfield Citizen of the Year. All this, while full-time caring for his wife **Carole**, who has MS.

Australian of the Year 2011 is **Simon McKeon**, who gives himself to many worthy causes, including MS research.

Simon McKeon



Simon was the Founding Chair of MS Research Australia until August 2010, when he stepped down to take on the Chairman's role at the CSIRO. Simon has guided and inspired MSRA to a position as Australia's peak body for MS research and made it one of MS Australia's most successful initiatives.

**Professor John Prineas AO** was awarded an Officer of the Order of Australia for distinguished service to medicine in the field of neurology as an academic, researcher and mentor, to improving the lives of people with Multiple Sclerosis, and to medical education. The Foundation has been honoured to support Professor Prineas' research.

Congratulations to these inspiring people on their richly deserved awards and their very significant contributions to MS research in Australia.

Professor John Prineas AO



# Balcony Bar Fundraiser

In 2010 Foundation Board member Sue Woodward organized a 'think tank' of young tennis players at The Oaks, Neutral Bay.

The result was the formation of 'tennis alumni', led by great supporters **Cindy Dock** and **Bree Calderwood**.

Cindy and Bree approached **Troy and Suzannah McDonald**, owners of the Balcony Bar,

Ersine Street in the city requesting support of the Trish Foundation. Troy and Suzannah very generously and readily agreed, the Balcony Bar Fundraiser held on 24th February 2011 being a great success.

Cindy and Bree, supported greatly by **Sue Woodward**, put in a tremendous amount of time and effort and raised \$5,000 for research. Generous Sponsors Balcony Bar, Fox Sports, Australian Turf Club Golden Slipper Day,

RedBalloon, Head and Babolat made a great contribution to the funds raised.

Fantastic contributors to the success of the fundraiser included MCs **Tanya Lee** and **Glenn Knox**, singer **Simon Rudston-Brown**, magician **Jack Black**, comedian **Sasha Marx** and our valued, hardworking volunteers.

"Cindy, Bree and Sue did a tremendous job organizing the terrific Balcony Bar Fundraiser. Their wonderful contribution is really appreciated as is the significant and generous support of Troy and Suzannah at Balcony Bar," said Foundation Chairman Carol Langsford. "Thank you also to our MCs Tanya and Glenn, our entertainers, our generous Sponsors and donors and everyone who attended and contributed to the funds raised for our research."

What a night! Tanya Lee, Sue Woodward, Bree Calderwood, Troy McDonald, Suzannah McDonald, Cindy Dock – thank you!



Some of the members of Team Trish MS, Rod Matthews, Sue New, David Purdue, Team Leader Mark Soulos, Chris Barrett, Dale Matthews

## Team Trish MS in the Gong Ride

Sensational supporters **Mark and Tania Soulos** led Team Trish MS in the Sydney to Wollongong Bike Ride.

Our heartfelt gratitude to fantastic supporters of the Foundation **David Purdue, Christopher Barrett, Sue New, Kirby Parsonage, Rod Matthews, Dale Matthews, Cameron Honey, Stephen Dunlevy** and Board member **Sue Woodward**, who joined Mark and Tania in raising over \$19,000 for the Foundation's research and also to the many very generous supporters who sponsored the inspirational team of riders.

## 2011 Round of Funding



The Trish Foundation is pleased to report the following Research Projects are being funded in our 2011 round of funding:

- **Dr Christopher Siatskas** at Monash Immunology and Stem Cells Laboratories Victoria, part funding for three years, his project being titled, "Induction of tolerance to CNS autoantigens".
- **Edwin Lim** at University of NSW, part funding for three years, whose project is, "Targeting the kynurenine pathway as a novel therapeutic intervention for MS".
- **Dr Mark Slee** at Flinders University & Medical Centre South Australia, his project being, "The Australian and New Zealand NMO Antibody Study".

All projects funded by the Foundation are recommended for funding by MS Research Australia's Research Management Council following assessment, evaluation and ranking, including a peer-review process. The projects are then considered by the Trish Foundation's honorary Scientific Research Committee and, having met the Foundation's firm funding guidelines, are recommended to the Foundation's Board for approval.

## MSRA Brain Bank

Despite over 150 years of research in Multiple Sclerosis (MS), the cause of the disease remains elusive. Animal studies have resulted in MS medications that can now effectively suppress the brain inflammation that causes new lesion formation and clinical relapses. However, our understanding of what causes progressive MS and the disabilities that characterise it remains limited. MS is a uniquely human neurological disease and studying brain tissue from people with MS is imperative to increasing our understanding of disease progression and finding a cure.

As brain tissue is rarely available for study during a patient's lifetime, scientists rely on MS patients and their families to donate post-mortem tissue for research purposes. The MSRA Brain Bank assists people with MS to become Brain Donors and collaborates with the Australian Brain Bank Network to retrieve MS-affected brains as rapidly as possible after death. High quality clinically and neuropathologically characterised brain and spinal cord tissue is supplied to approved scientists for their research towards finding the cause and a cure for MS.

There are now more than 600 formally consented MS Brain Donors across Australia,

and another 700 people with MS are in the process of completing the paperwork. Twenty-three MS brains have been banked so far, 14 of which have post-mortem intervals of less than 24 hours. Fixed and frozen MS tissue have already been supplied to researchers at the University of Sydney and the University of Western Australia, and a further 11 research groups have expressed an interest in using MSRA Brain Bank material. Ultimately, the success of the Brain Bank will contribute to key discoveries that impact on the lives of people with MS.

To register as a Brain Donor or to support the MSRA Brain Bank by giving a donation, please visit [www.msbrainbank.org.au](http://www.msbrainbank.org.au) or call 1300 672 265 for more information. You can also search for MS Research Australia Brain Bank on Facebook!

Trish Foundation supporters will no doubt recall the Foundation firstly underwrote and then supplied the initial funding for the MS Brain Bank.



## Straight to the cause

"The 'holy grail' of MS research? Finding the cause, of course." This simple statement underpins the work of **Associate Professor Helmut Butzkueven**, a long-term and much valued research partner of the Trish Foundation.

Originally from Germany, Associate Professor Butzkueven's interest in neuroscience and immunology dates back to his school days. Yet it wasn't until he moved to Australia in 1984 that the decision was taken to make it his career - studying Medicine at Melbourne University and qualifying as a neurologist in 1999.

Associate Professor Butzkueven then went on to do a PhD in animal models of MS at the Walter and Eliza Institute.

"We still need to translate animal work to human drugs, and to my mind this kind of research translation is one of the most important challenges for MS researchers in Australia," he comments.

The Trish Foundation is extremely proud to have co-funded Associate Professor Butzkueven's first Post-Doctoral Fellowship with the NHMRC from 2006-2009. As the recipient of the inaugural Betty Cuthbert Fellowship, he established and managed the rapid expansion of an international online MS outcomes registry run out of the Royal Melbourne Hospital. This registry follows more than 16,500 MS patients worldwide, including over 2,100 Australians.

"This registry is an invaluable resource as it is beginning to answer some very important questions regarding the long-term outcomes of MS now, as well as the usefulness of MS treatments", Associate Professor Butzkueven explains.

During this time, Associate Professor Butzkueven also collaborated with a network of Australian and New Zealand scientists focusing solely on genetics and MS research. "I am very proud to have helped establish a large collaborative genetics study which discovered two new MS-related genes and continues to contribute a lot to our knowledge of the genetics of MS", he says.

Currently, the Trish Foundation funds Associate Professor Butzkueven's research focusing on the molecule Dab2, produced by an immune cell type called macrophages.

Associate Professor Butzkueven explains: "Macrophages are the immune cells that probably do most of the permanent damage in MS lesions. We are testing whether Dab2 is important in brain injury in MS, using animal models. This work is incredibly exciting because, if we can learn how to reduce or switch off Dab2 levels, we might be able to reduce this damage."

**Professor Bill Carroll**, Chairman of the MS Research Australia's Research Review Board and Research Management Council confirms Dr Butzkueven's work is of the highest order. "He is one of the most outstanding clinician/scientists working in Australia. He has been able to span the wide range of research between the laboratory and the bedside".

Although a 'typical working day' does not exist, Associate Professor Butzkueven spends a lot of his time project planning and managing a lab focusing solely on human MS genetics and immunology at the Department of Medicine, University of Melbourne. He also works at two MS

Clinics at the Box Hill and Royal Melbourne Hospitals; commencing in 2002, these clinics now see approximately 1,500 people with MS.

Married with two daughters aged 13 and 10, and the proud owner of a female dog, Associate Professor Butzkueven freely admits he's 'fifth in charge' outside of the laboratory and is happy to let the women in his life take charge. He confesses to "battling a German's love for cheese and pork" and loves to cook, with Neil Perry's 'Balance & Harmony' cookbook the latest source of culinary inspiration.

And when there is time to take a much-deserved break from his inspirational work for MS, the Butzkueven family pack up and head to an isolated spot in East Gippsland Victoria to enjoy the simple pleasures of camping and hiking.

Associate Professor Butzkueven's passion for his research into MS is because of the people with MS. "It's a great privilege to have met so many and to have walked with them for a while. I detest the damage that an illness like MS wreaks on so many people's lives. But I am noticing that medical science is starting to do a lot better, with new and effective drugs being developed and entering clinical practice. This proves that research is worthwhile."

"Helmut is a top clinician and terrific researcher – with this research he is fast-tracking our efforts to eventually solve MS," says Executive Director MS Research Australia, **Jeremy Wright**.

**"We are testing whether Dab2 is important in brain injury in MS, using animal models. This work is incredibly exciting because, if we can learn how to reduce or switch off Dab2 levels, we might be able to reduce this damage."**

# Incubator Grant Hatches Further Funds

In 2010, **Dr Fabienne Brilot-Turville** and **Dr Russell Dale**, based at The Children's Hospital, Westmead, received a \$26,000 incubator grant from the Trish Multiple Sclerosis Research Foundation to study biomarkers in early paediatric demyelination.

In a short period of time the team of young researchers, with complementary skills in clinical neuroscience and basic science immunology, have made rapid progress in the understanding of paediatric MS. Their research has already resulted in a remarkable four publications in peer-reviewed scientific journals. 'We are grateful for the support of The Trish Multiple Sclerosis Research Foundation', explained Dr Brilot-Turville.

Up to 10% of adult MS sufferers have their first episode of demyelination when they are young, and MS is being diagnosed increasingly in children. A protein named MOG (Myelin Oligodendrocyte Glycoprotein) is thought to be important in the autoimmune response observed in MS. Dr Brilot-Turville and colleagues have recruited the largest Australian group of Children with a first episode of demyelination. 'With our Incubator grant from the Trish Multiple Sclerosis Research Foundation, we have been able to show that the presence of antibodies against MOG is a sensitive indicator in a subgroup of children with their first episode of demyelination,' reported Dr Brilot-Turville.

The researchers have also developed a new test to enable them to identify white blood cells, especially antibody-producing B cells, in the cerebrospinal fluid of patients. This is important, as B cells may be involved in the generation of MOG antibodies in children with first episode of demyelination.

These exciting developments have enabled Dr Fabienne Brilot-Turville to build on the Trish Multiple Sclerosis Research Foundation funding and gain a three year Research Fellowship from the Star Scientific Foundation to continue her research.

**"In a short period of time the team of young researchers, with complementary skills in clinical neuroscience and basic science immunology, have made rapid progress in the understanding of paediatric MS."**

Dr Russell Dale and Dr Fabienne Brilot-Turville



## Proteomics in MS research

In 2009, **Dr Michael Barnett**, and colleagues **Professor Prineas** and **Dr Ben Crossett**, of the University of Sydney, were awarded a \$278,000 project grant from the Trish Multiple Sclerosis Research Foundation.

Professor Prineas has received international acclaim and several major awards for his lifetime of achievements in MS research including in 2009, the MS International Federation's highest accolade, the Charcot Award. Together with clinician researcher Dr Barnett and proteomics specialist Dr Crossett, the team makes a formidable force for progress in MS research.

While the cause of MS remains unknown, we do know that an autoimmune response plays an important role in disease development. Autoimmune responses carried out by inflammatory immune cells from the blood are generally accepted to initiate the cascade of events that lead to an MS lesion in the brain or spinal cord.

However, in 2008, Professor Prineas and his colleagues, sent significant ripples through the MS research community with their discovery of evidence for sick and dying brain cells that preceded the influx of inflammatory immune cells from the blood. Instead, this early damage is accompanied by activation of the local 'house-keeping' microglial cells that clean up damaged cells.

In order to pursue this unprecedented new avenue in MS research the team has set their sights on identifying the earliest triggers for this damage to myelin. To do this they have turned to high powered 'proteomics' technology.

Proteomics is the study of all the proteins that are activated and deactivated, in a particular biological situation and can amount to studying 1000s of proteins in one go.

An important and vital step in this project has been the development and refinement of an exciting method to extract proteins from preserved brain tissue, specifically targeting areas within MS lesions. Dr Barnett has painstakingly developed this highly complex, multi-step new technique. The technique, which will be of use to MS researchers worldwide and has been presented at 4 international meetings including PACTRIMS (Hong Kong 2009) and the Human Proteome Organisation (HUPO) world annual congress (Sydney, 2010).



Combining this technique with Dr Crossett's proteomics expertise has led the team to identify over 80 unique proteins in tissue from MS lesions compared to tissue from people with no neurological disease. This is the first crucial step in a huge undertaking as these proteins must now be individually characterised and studied.

The work has been recently submitted for publication to the Journal of Proteome Research. It is anticipated that the identification of the proteins involved in the earliest stages of MS lesions will help provide clues to the causes of MS and may lead to targeted and more effective treatments.

## Funds multiplied yet again

In 2010 the Trish MS Research Foundation started funding **Dr Ben Emery's** MS research project at the University of Melbourne.

The project looked at a 'master' genetic switch that can potentially regulate myelination and repair neural damage caused during MS. Last year Dr Ben Emery was awarded \$150,000 by MSRA, funded by the Trish Foundation, to undertake this research and has now been successful in gaining an NHMRC grant of \$555,185 for 2011 onwards for the direct continuation of this work.

**"The MSRA/Trish Foundation support has been vital for getting the research project up and running. The exciting results obtained with their support served as the basis for getting the NHMRC grant up, which will in turn fund the continuation of this research over the coming years."**

Dr Ben Emery, University of Melbourne

## Call for Applications for a Trish Foundation Postgraduate Scholarship

The Trish Foundation has called for applications for a Trish Foundation Postgraduate Scholarship, commencing 2012. For details visit [www.trishmsresearch.org.au](http://www.trishmsresearch.org.au).

# Research Reports

## Understanding mechanisms of brain and spinal damage in MS: The role of Dab2

**Dr Helmut Butzkueven**, working at the Florey Neuroscience Institutes, received a project grant in 2010 from the Trish Multiple Sclerosis Research Foundation. In MS, nerve cells are damaged by the immune system and Dr Butzkueven has been investigating the role of the protein Dab2 in brain and spinal damage. At present, available treatments for MS reduce attacks but do not prevent progression. It is hoped that Dab2 may provide clues to finding treatments that prevent MS progression.

'In a laboratory model of MS, we have discovered that immune cells make a molecule called Dab2, and that this worsens nerve cell damage,' Dr Butzkueven explained. 'We are now trying to understand exactly how this works, ultimately hoping to block its action to reduce MS severity.'

Dr Butzkueven and colleagues are now setting up experiments to help them find out more about Dab2. They have established a new technique to grow neurons in the laboratory and will use them to test the damaging capacity of immune blood cells that come from mice deficient in Dab2. The results of these ground breaking experiments are expected in mid-2011.

## Natalie Payne – PhD research on the therapeutic potential of stem cell therapies for treatment of multiple sclerosis

In 2007 **Natalie Payne** was awarded a PhD scholarship to conduct a cutting-edge research project at Monash University with **Professor Claude Bernard**.

Current MS therapies targeting the immune system benefit only a proportion of patients and the next 'holygrail' for MS research is to discover therapies that will repair existing nerve damage. Ms Payne's research has focused on the potential use of stem cells to treat MS. Stem cells are 'blank slates' that have the potential to develop into a

multitude of more specialised cells. They have also been shown to home-in on sites of tissue injury and inflammation where they not only improve the immune response, but also enhance repair. It is vital to perform extensive laboratory studies before using stem cell therapies in humans.

Ms Payne has investigated the therapeutic potential of two different kinds of adult stem cells called MSCs (Mesenchymal Stem Cells) and NSCs (Neural Stem Cells). In a laboratory model of MS, she discovered that administering these stem cells resulted in suppression of signs of disease.

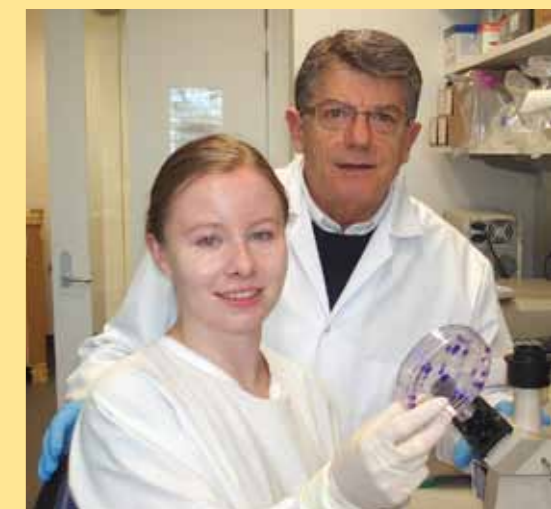
Ms Payne's research has been extraordinarily successful and she has already made a significant contribution to Australian MS research despite being in the early stages of her career. Her research has resulted in three publications in international peer-reviewed journals, with a further three on the way. She is currently in the final stages of writing her PhD thesis and has also presented her findings at no less than 11 national and international conferences in the past 3 years.

"The support from the Trish Foundation for my PhD has been fantastic and it also gave me the opportunity to travel to Spain to attend the 10th International Congress of Immunology in October last year," said Ms Payne. "There were a number of leading international MS researchers there, including significant contributors to the area of stem cell treatment for MS, which made attending this conference particularly rewarding."

### References

1. Payne N, Siatskas C, Barnard A, Bernard CC. The prospect of stem cells as multi-faceted purveyors of immune modulation, repair and regeneration in multiple sclerosis. *Curr Stem Cell Res Ther.* 2011; 6(1): 50-62.
2. Siatskas C, Payne N, Short MA, Bernard CC. A consensus statement address mesenchymal stem cell transplantation for multiple sclerosis: It's time! *Stem Cell Rev.* 2010; 6(4): 500-6.
3. Payne N, Siatskas C, Bernard CC. 2009. The promise of stem cell and regenerative therapies for multiple sclerosis. *Journal of Autoimmunity* 31(3): 288-94.

Natalie Payne and Professor Claude Bernard



PLEASE JOIN US FOR  
THE TRISH FOUNDATION'S



MAGICAL  
*Mystery*  
BALL

Roll up, roll up for the magical mystery ball

Roll up, and make a reservation

Be part of unlocking the mystery to MS

To finding a cure

The magical mystery ball is awaiting to take you away

**Where** Grand Ballroom, Hilton Sydney,  
488 George Street, Sydney

**When** Saturday 10th September 2011, 6:30pm for 7pm

**Celebrity Master of Ceremonies**

**Mark Beretta**, Channel 7's *Sunrise*,  
Australia's number one breakfast show

**Feature Entertainment**

Mental as Anything, iconic Australian Band

**Additional Entertainment**

Allan Caswell, winner 6 Golden Guitars at Tamworth,  
Simon Rudston-Brown, Acoustic Guitarist.

**Includes** Pre-dinner drinks, 3 course meal, beer, wine  
and soft drinks

**Dress** Lounge Suit

**TICKETS**

**Early-bird\*** .....\$175

**Tickets not paid  
for by 31 July** .....\$200

**Table for 10 people** .....\$1,750

**Corporate Tables  
for 10 people** .....\$3,950

Corporate Tables include:

- Drinks and canapés for 10 people 6pm-7pm in the exclusive Trish VIP Lounge with entertainment and mystery celebrities
- Magical mystery prizes awarded prior to commencement of Ball
- Preview of evening's "magical mystery" auction items
- Accommodation for 2 at Hilton Sydney on the evening
- Corporate table for 10 positioned in a prime position
- Corporate logo featured on the large screens, program and Foundation's website
- Recognition of your corporate support from the MC during the evening
- Exclusive opportunity for a personal tour of a clinical research facility to break down the mystery of MS
- Recognition in the Foundation's newsletter distributed bi-annually to the MS community, over 1,500 Corporations, organisations and individuals
- Display materials promoting your Corporation on the night
- Limited parking available

Tables are available for 10 people or alternatively, the Foundation will seat you at a table.

\* Tickets paid for by 31st July will go into the draw to win a night's accommodation at Hilton Sydney on the evening of the Ball. Winner drawn 2nd August 2011

**GALA  
RAFFLE**

Win a trip to Cairns for two people staying at Cairns' finest first class hotel, The Pacific International.



**PARKING**

\$20...Secure Parking Hilton Sydney

\$8.....QVB Carpark.

**ACCOMMODATION**

If you wish to stay at the Hilton Sydney on the evening of the Ball, a special rate of \$279 will apply which includes full breakfast for two people in the Glass Restaurant. Bookings should be made direct with the Hotel, Selina Aoake on 9265 6046 or email selina.aoake@hilton.com, quoting you are attending the Trish Foundation's Magical Mystery Ball.



Book online at [www.trishmsresearch.org.au](http://www.trishmsresearch.org.au) or contact the Foundation on **0410 410491** or email [info@trishmsresearch.org.au](mailto:info@trishmsresearch.org.au)

**Sincere  
gratitude**

... to the Trish Foundation's very valued Sponsors, donors and supporters for contributing to the **over \$2 million** raised for vital MS research projects

... to the Trish Foundation's Joint Patrons, Dr Brendan Nelson and Hon Barry O'Farrell

... to the Trish Foundation's Honorary Auditor Peter Done



Brenne Batten and Caz Zuluaga on the road to Sydney

**Christmas cards**

The Trish Foundation will not be selling Christmas cards this year.

We wish to record our sincere gratitude to Matthew Conway, Conway Design who pro bono, designed our original branding and has designed Christmas cards exclusively for the Foundation each year since inception.

**Save the Date**

Trish Foundation's Golf Day and Dinner will be held at Strathfield Golf Club on 16th February 2012.

Thank you to Niall King, Ray Wilson, Les Hockley and Geoff Thoroughgood for conducting this special event on behalf of the Foundation again in 2012.

**More inspirational support**

Our sincere appreciation to **Brenne Batten and Caz Zuluaga** who dedicated their amazing initiative, MS 4 MS Melbourne to Sydney Bike Ride to the Trish Foundation, raising approximately \$5,500 for our research.

Thank you to Brenne and Caz, to your families who accompanied you and contributed so much to your mammoth effort and to all the generous donors who contributed to the funds raised.